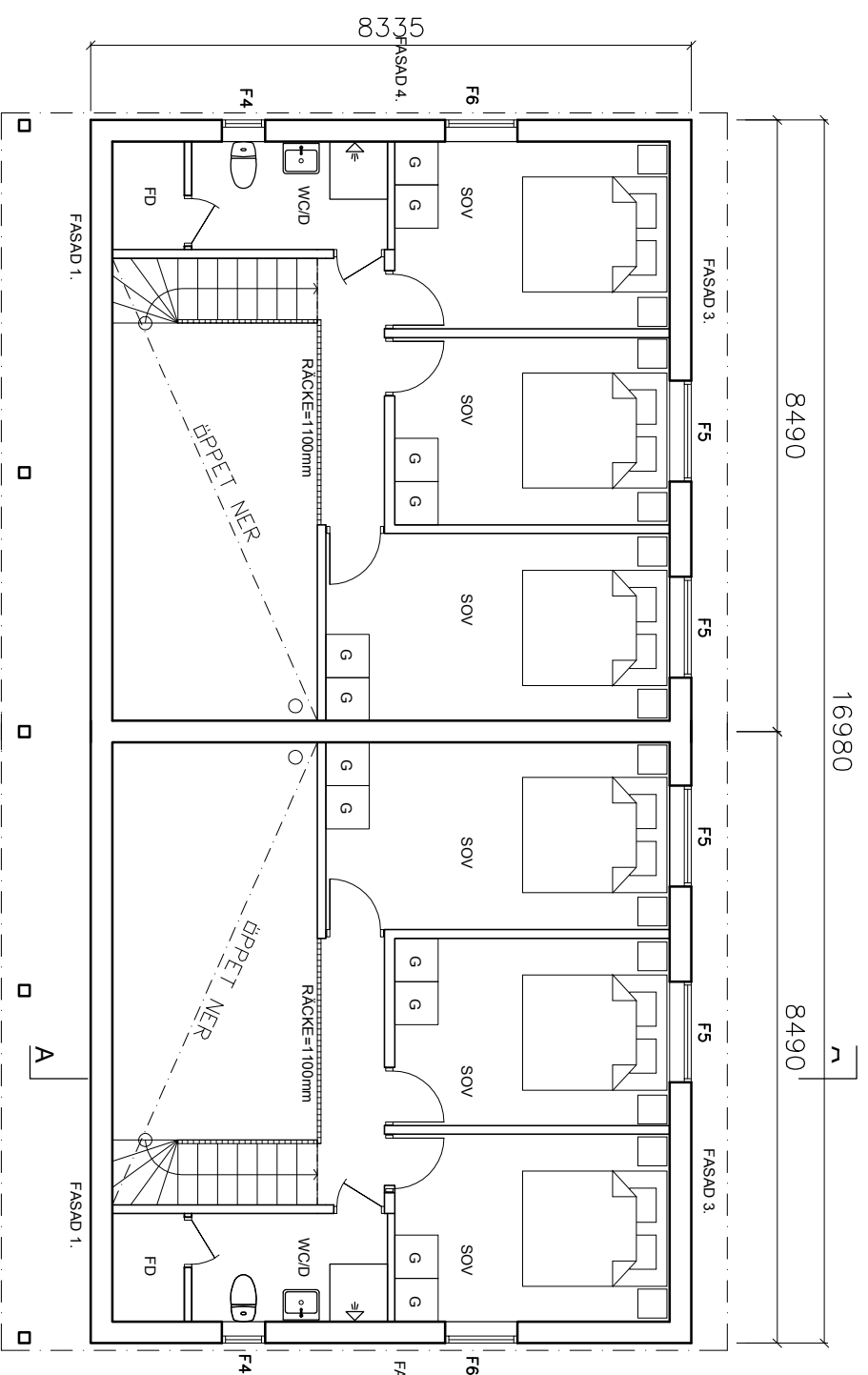
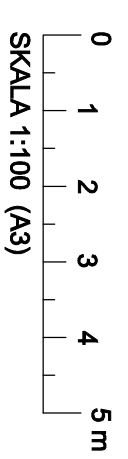


ENTRÉPLAN



PLAN, LOFT



Bygglöshandling, 51:64
 Kröket, Parkhus stuga

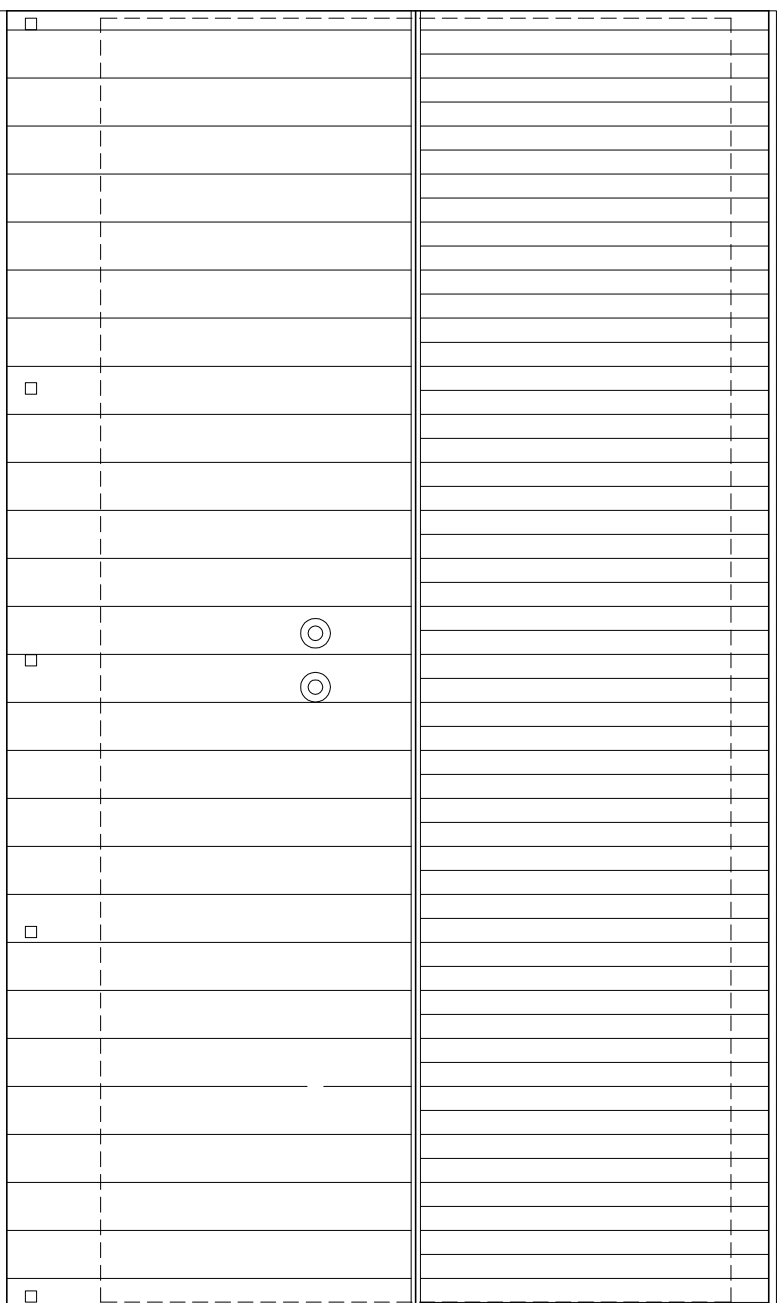
planer, Skala 1:100

A00:02

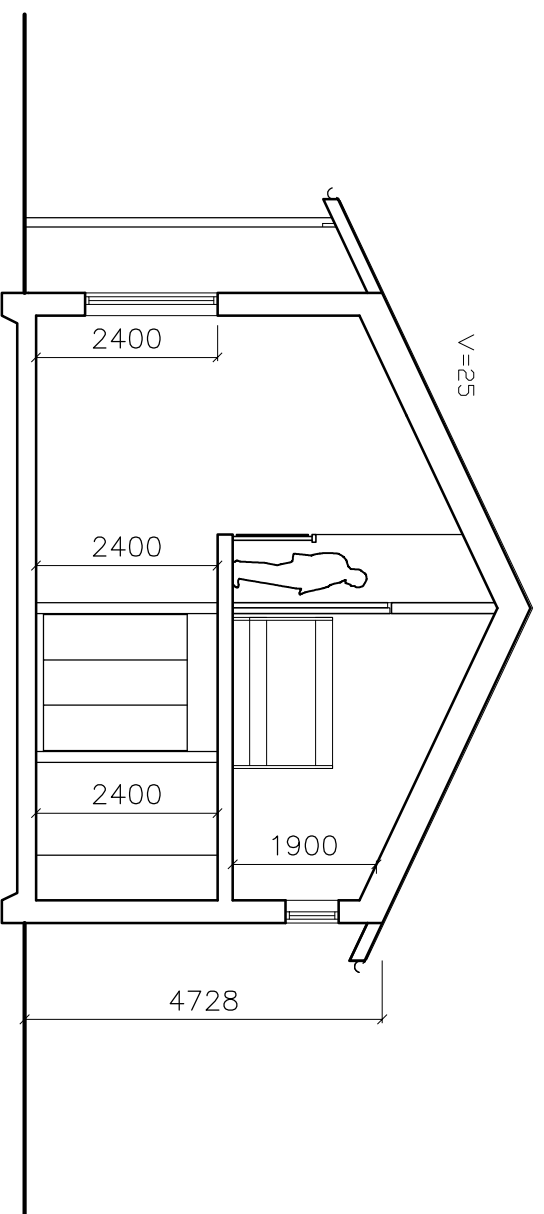
DUBBEL REN, BYA 79,2x2 = 158,5 kvm TOTALT,
 BDA PER HUS, 109 kvm, (62,5 kvm + loft 46,5 kvm)

2018-03-07

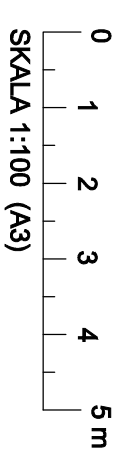
Komplettering 2018-12-11



TAKPLAN



SEKTION A-A



Bygglövhandling, 51:64
 Köket, Parhus stuga

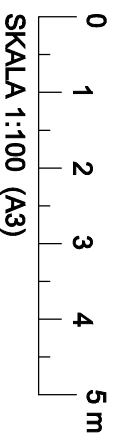
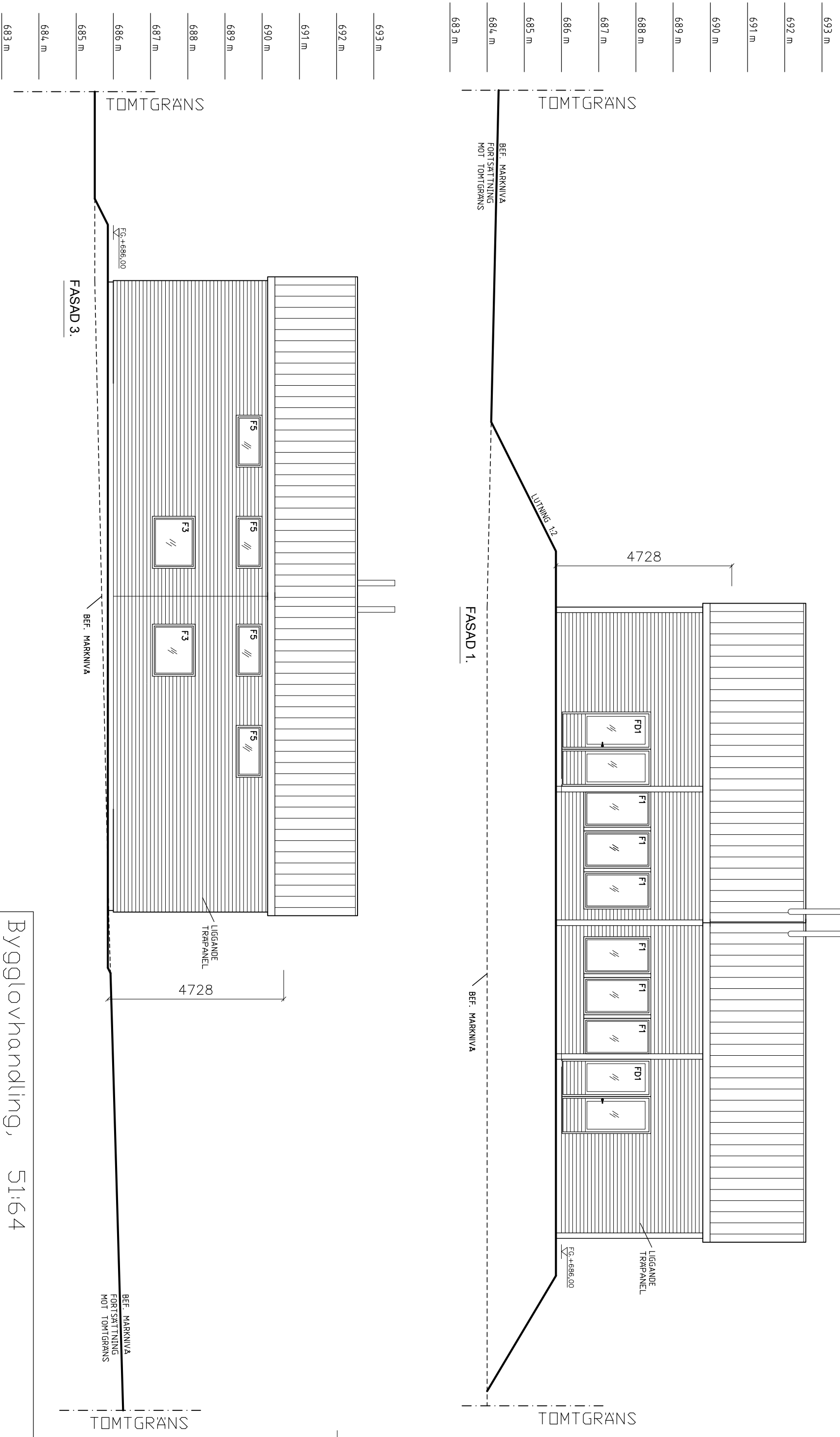
takplan, sektion Skala 1:100

A00:03

DUBBEL REN, BYA 79,2x2 = 158,5 kvm TOTALT,
 BDA PER HUS, 109 kvm, (62,5 kvm + loft 46,5 kvm)

2018-03-07

Komplettering 2018-12-11



Komplettering 2018-12-11

Bygglovhandling, 51:64
 Kröket, Parkhus stuga

Fasader, Skala 1:100

A00:04

DUBBEL REN, BYA 79,2x2 = 158,5 kvm TOTALT,
 BDA PER HUS, 109 kvm, (62,5 kvm + loft 46,5 kvm)

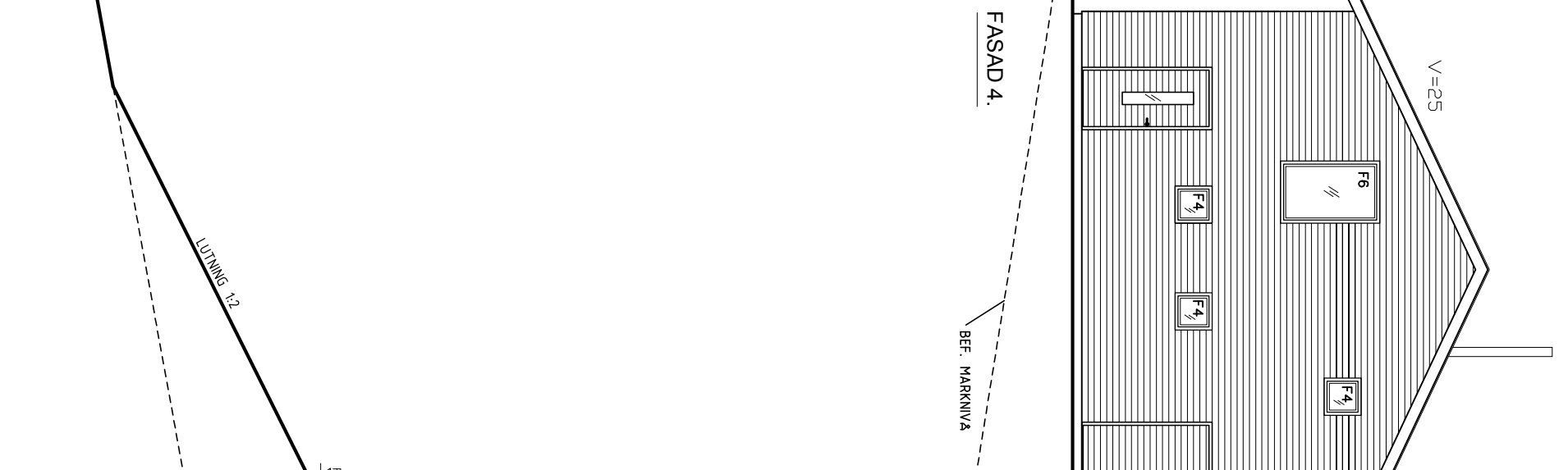
2018-03-07

693 m
692 m
691 m
690 m
689 m
688 m
687 m
686 m
685 m
684 m
683 m

TOMTGRANS



FASAD 4.
BEF. MARKNIVA
EG. +686,00
V=25
4728



FASAD 2.
BEF. MARKNIVA
EG. +686,00
V=25
4728
LIGGANDE TRAPPANEL

TOMTGRANS

TOMTGRANS

BEF. MARKNIVA FORTSÄTTNING MOT TOMTGRANS

LUTNING 1:2

BEF. MARKNIVA FORTSÄTTNING MOT TOMTGRANS

TOMTGRANS

TOMTGRANS

BEF. MARKNIVA FORTSÄTTNING MOT TOMTGRANS

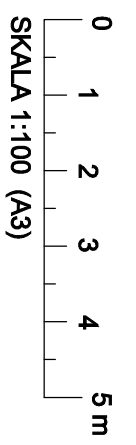
TOMTGRANS

TOMTGRANS

BEF. MARKNIVA FORTSÄTTNING MOT TOMTGRANS

TOMTGRANS

TOMTGRANS



Komplettering 2018-12-11

Bygglovhandling, 51:64
Kökret, Parhus stuga
Fasader, Skala 1:100
A00:05
DUBBEL REN, BYA 79,2x2 = 158,5 kvm TOTALT,
BDA PER HUS, 109 kvm, (62,5 kvm + loft 46,5 kvm)
2018-03-07