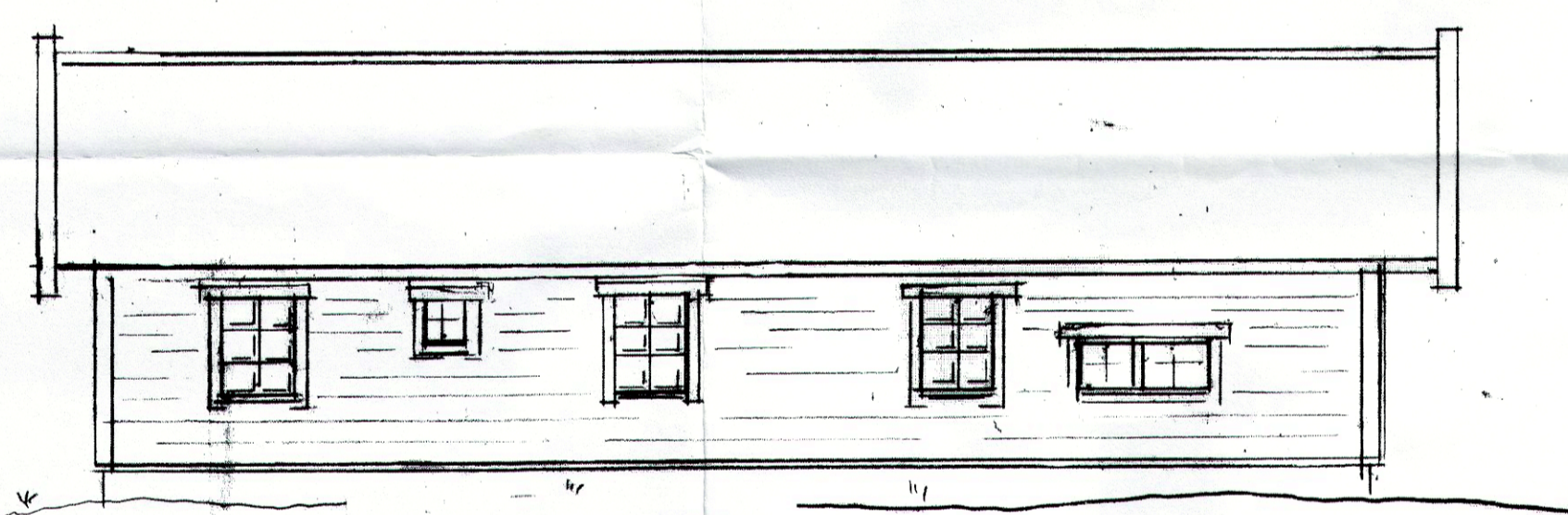
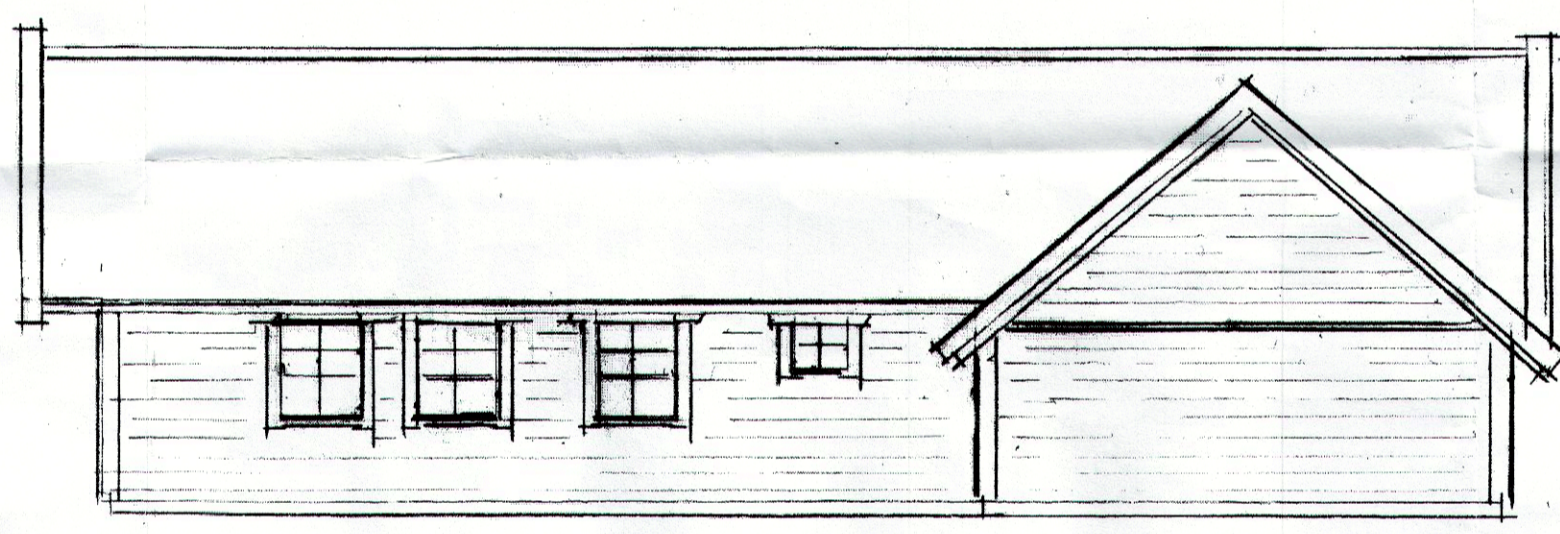


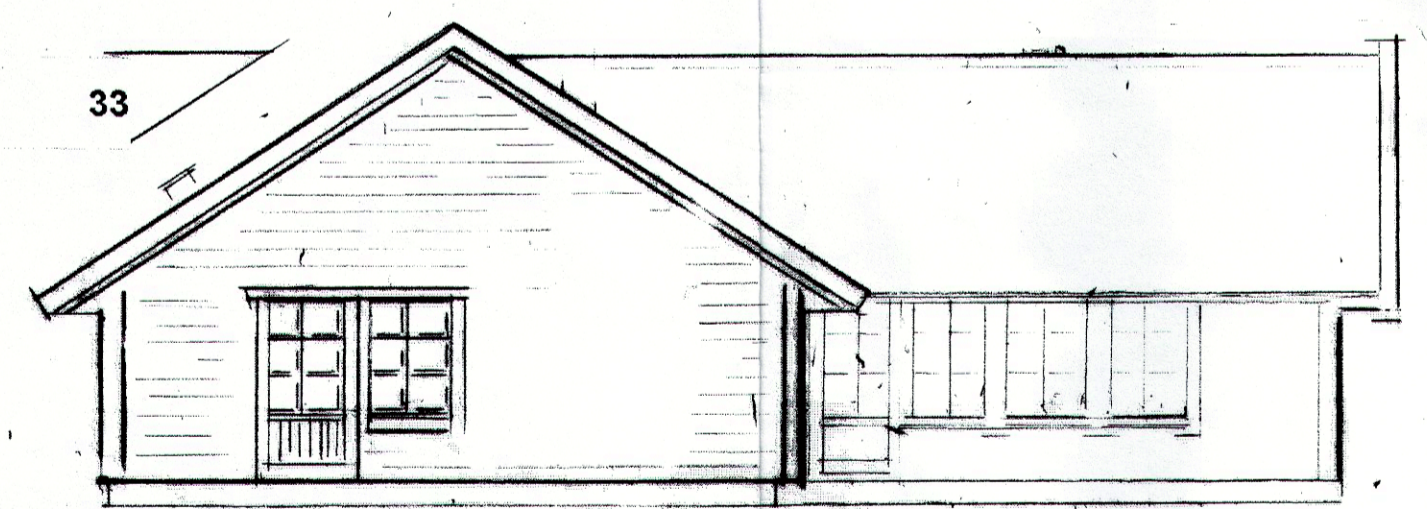
22 Golvet  
Golvvärme  
45-45  
45-195  
Golvlath-beard  
300 Lösull



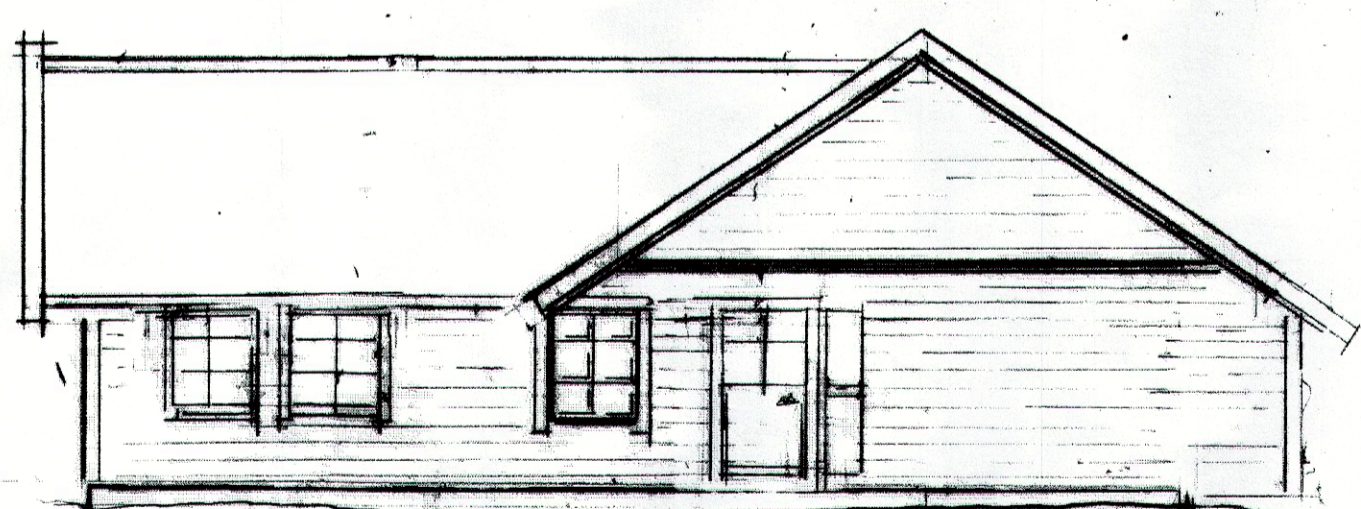
**FASAD MOT NORR**  
3x10-13  
1x F2 2x6 FROSTGL.  
1x F3 18x6



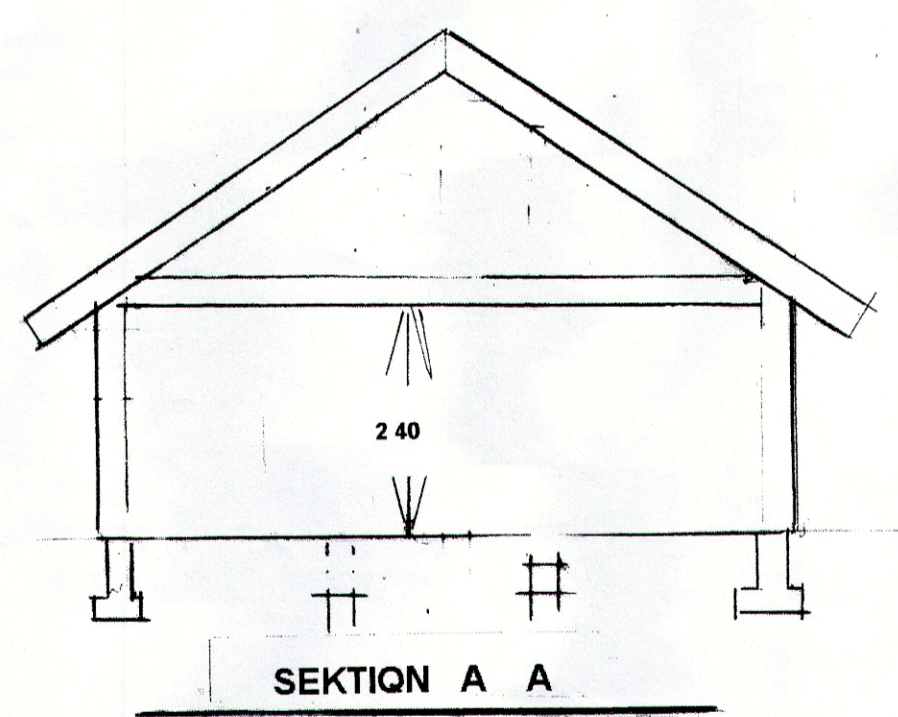
**3x F1 10x13 FASAD MOT SÖDER**  
1x F2 6x6 FROST



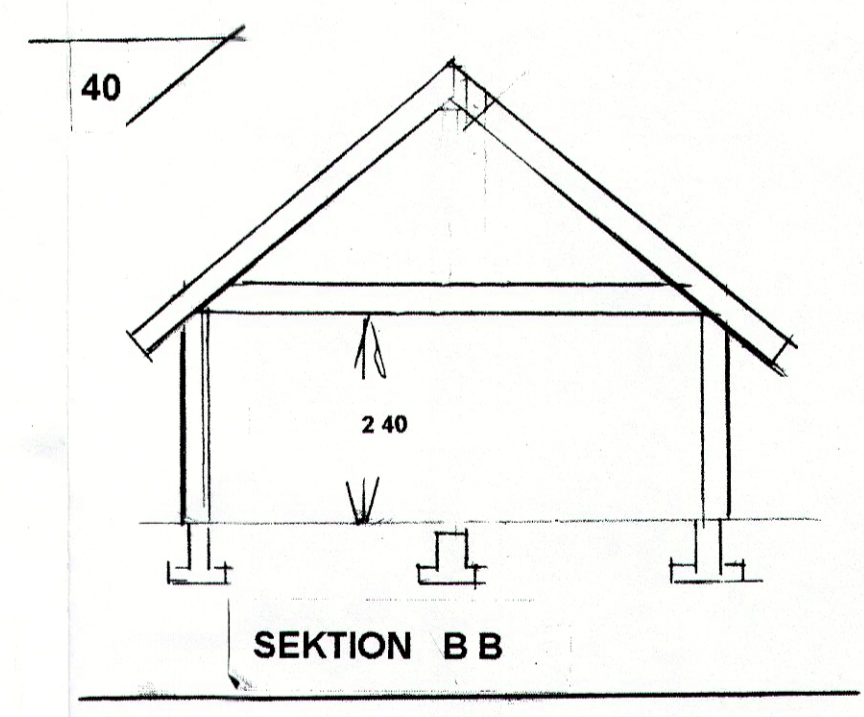
**FASAD MOT VAST**  
4x F4 10x16  
2x FD 9x21/16



**FASAD MOT ÖST**  
3x F1 10x13  
1x YD 10-21  
1x SIDPARTI 3-21



**ELDST SOKES SENARE**  
TAKHÖJD 2.40 HELA BYGGNAD,  
ALLA INNEDORRAR 9.21



NORRTALJE KOMMUN  
BYGG- OCH MILJÖNÄMNDEN  
2015-11-17  
Dnr 15-2692 Dpb

**SNICKERI**

F 1	10 13
F 2	6 6 FROSTGL
F 3	18 6
F 4	10 16
FD	9 21 16
YD	10 21
SIDPARTI	3 21

**REVIIDERAD 15 11 08**  
**TOLFTBYGG AB**

**NORRTALJE KOMMUN**  
KUSBODA 1 23  
NYBYGGNAD  
SKALA 1 100  
UPPL VASBV 2015 02 15  
GUNNAR FRIDSTROM 0734 208012