

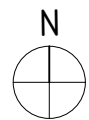
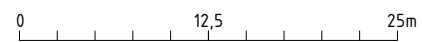
BJÖRHÖVDA 1:33
2022 - 05 - 15

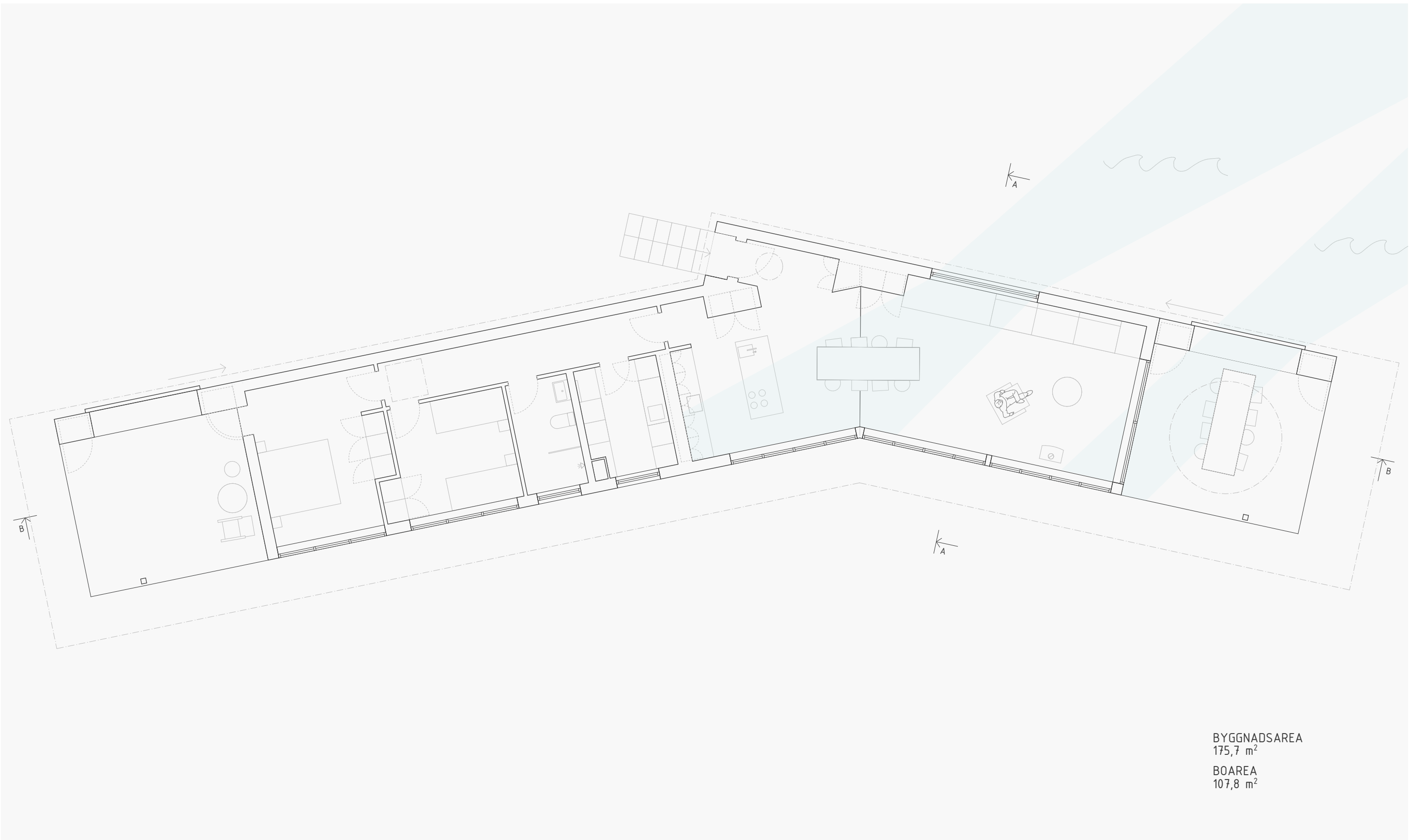
I.
PULPETTAK

II.
SADELTAK

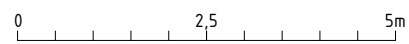


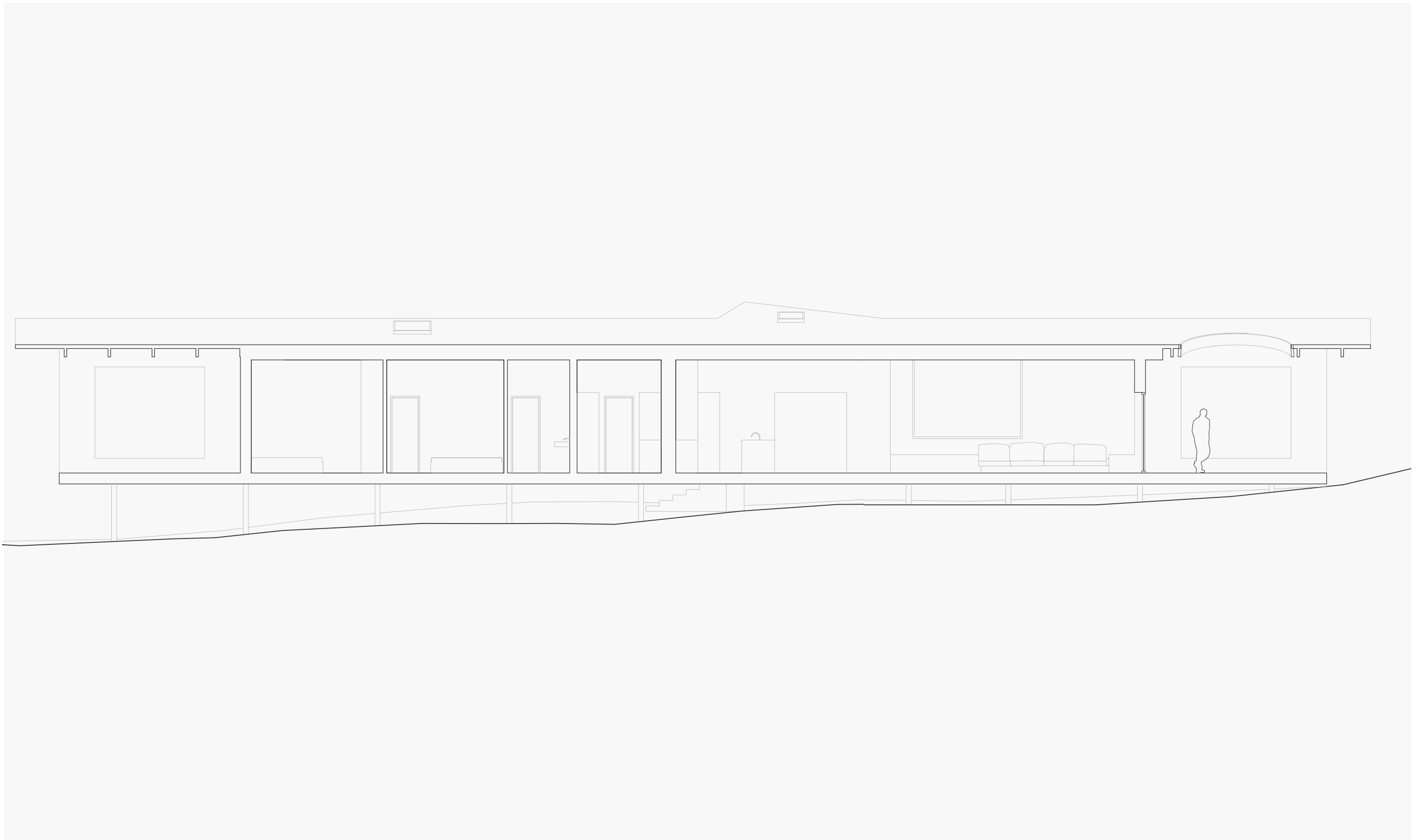
SITUATIONSPLAN





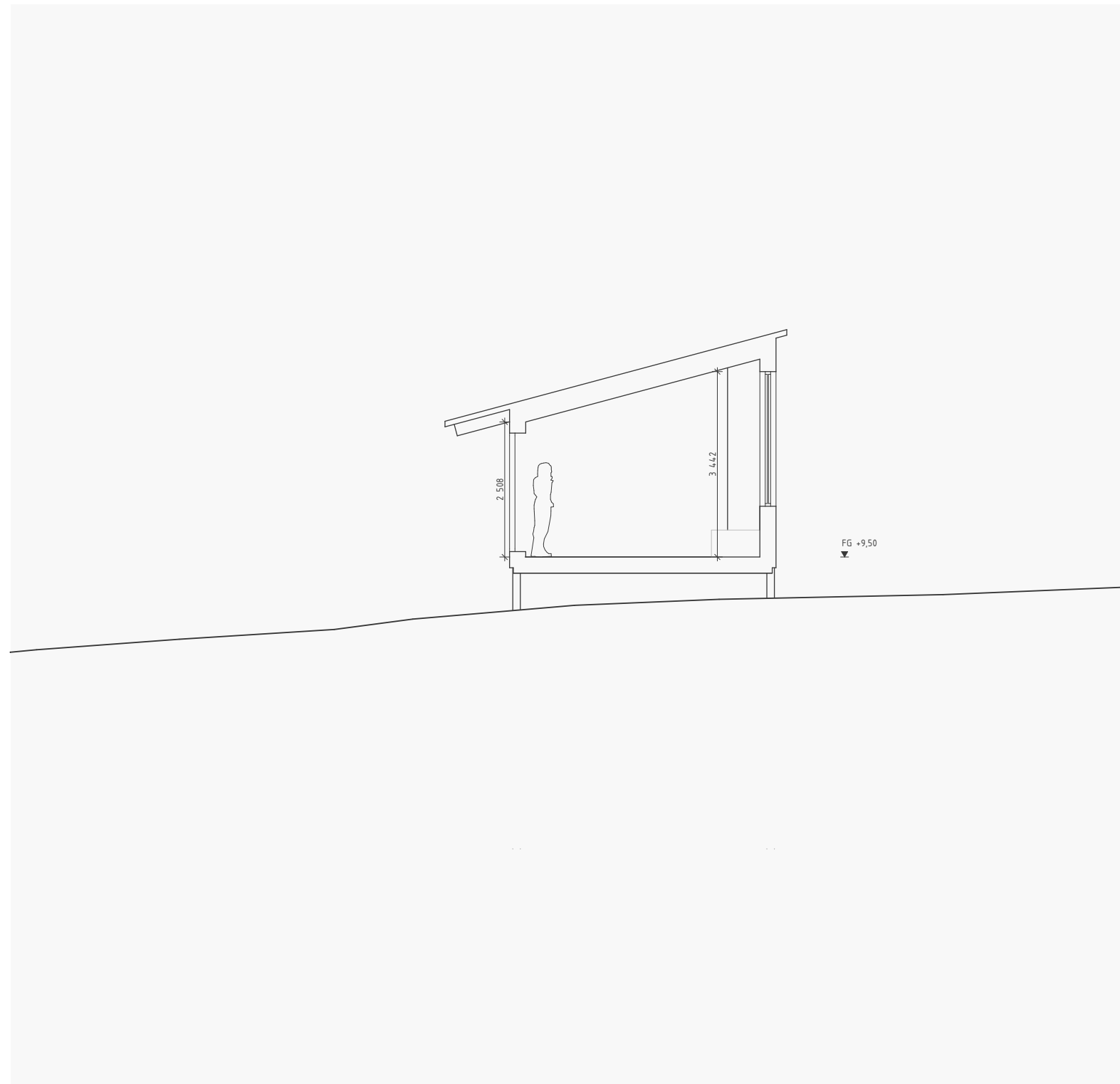
MARKPLAN



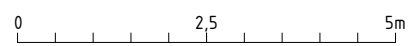


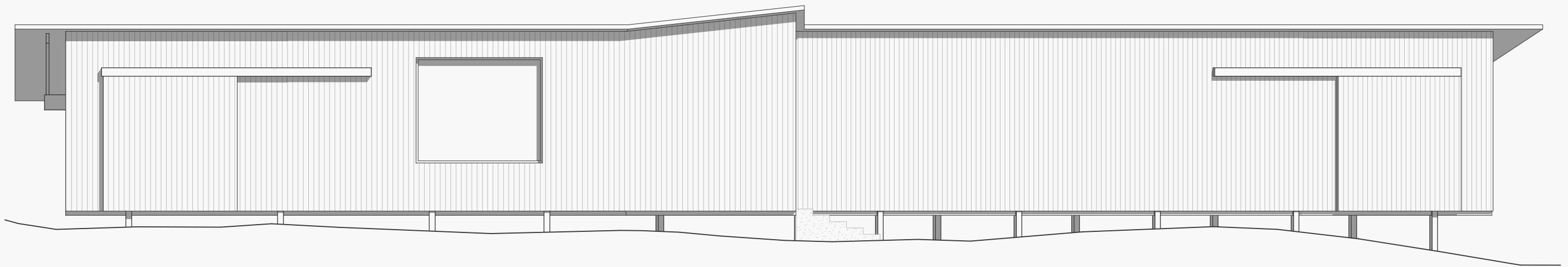
SEKTION B - B

0 2,5 5m

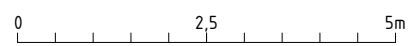


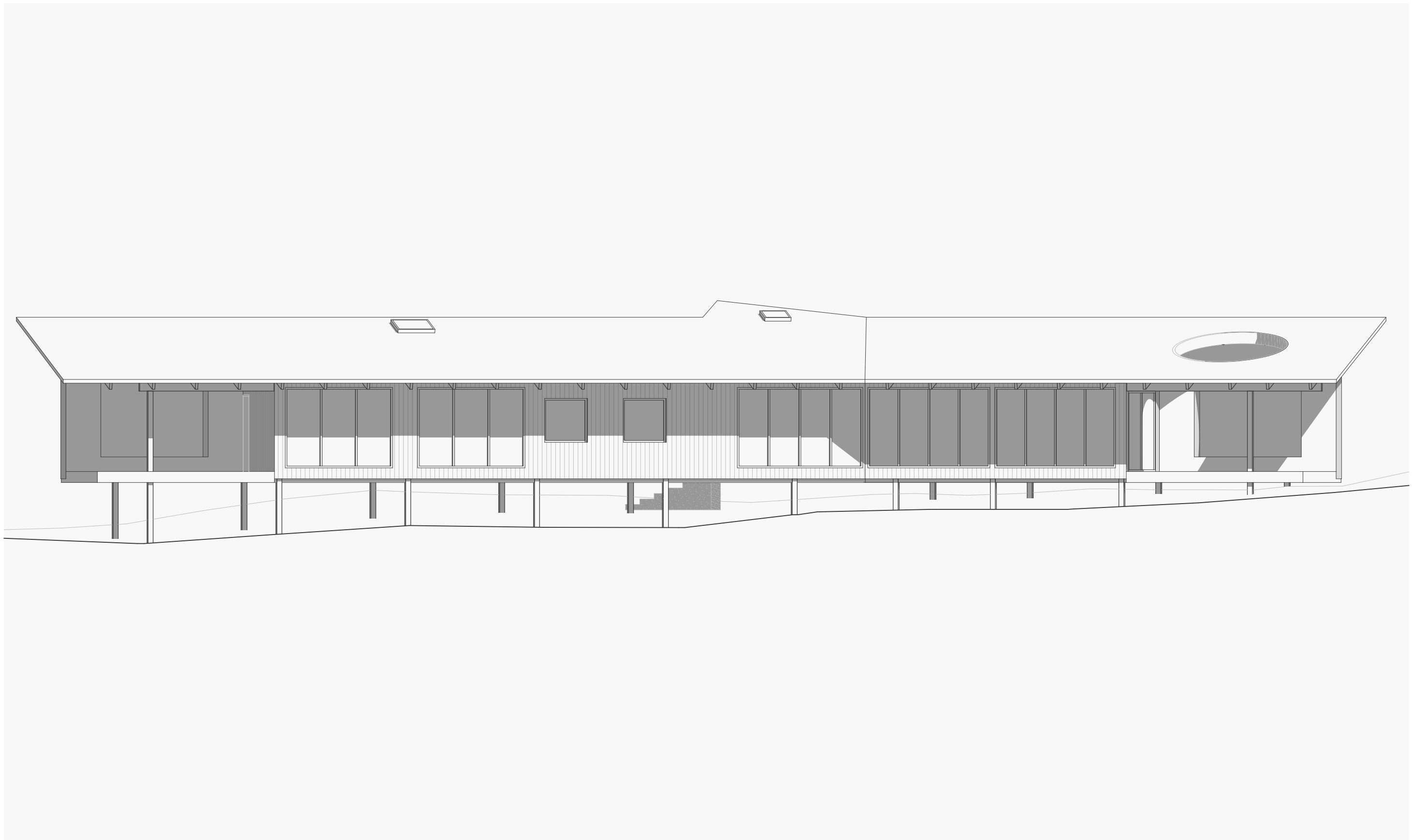
SEKTION A - A



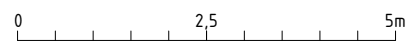


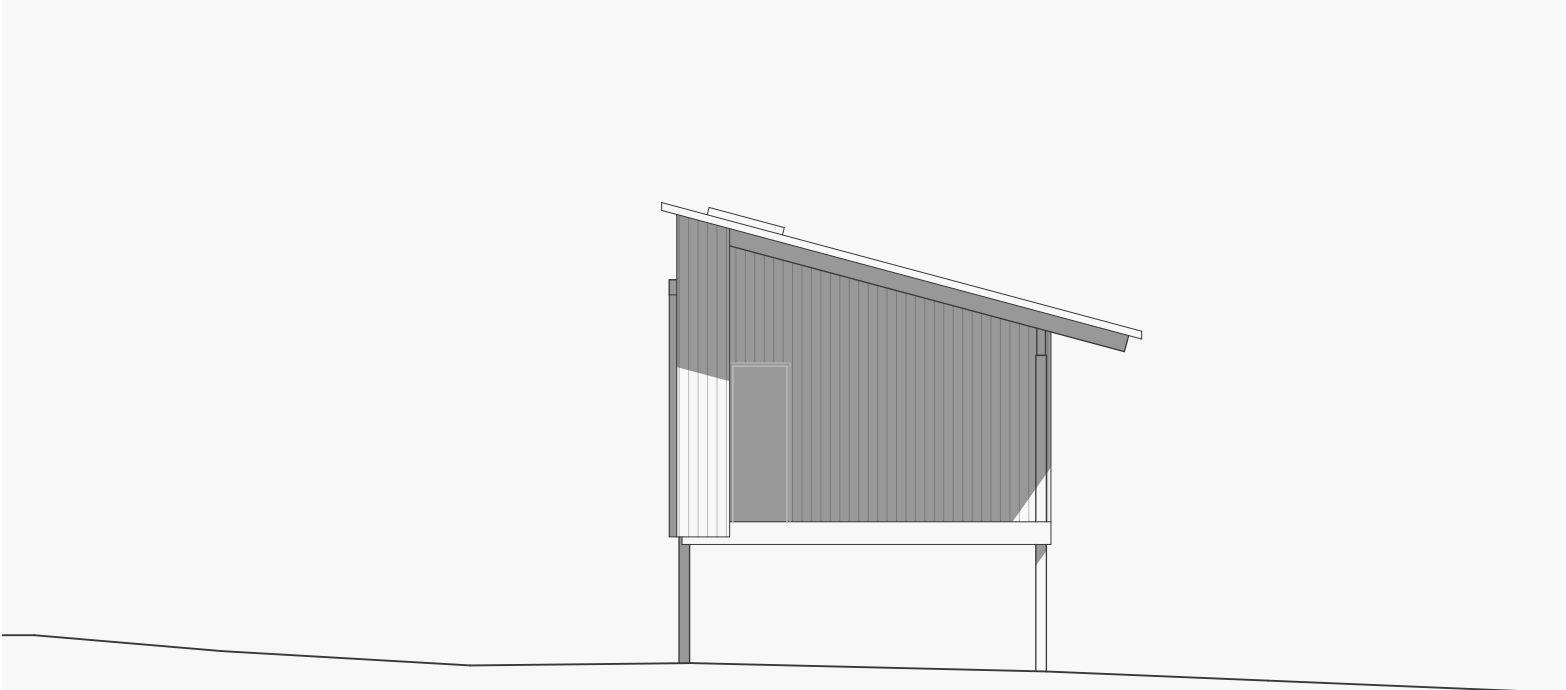
FASAD MOT NORR



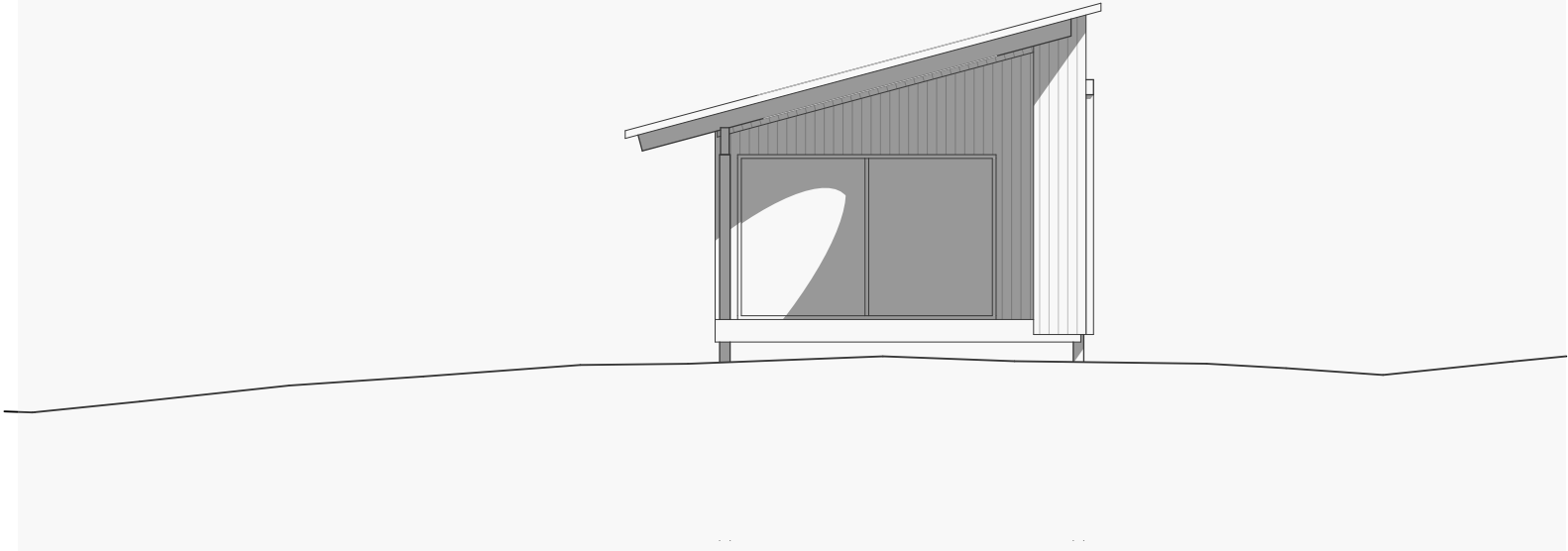


FASAD MOT SÖDER

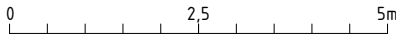




FASAD MOT VÄSTER



FASAD MOT ÖSTER

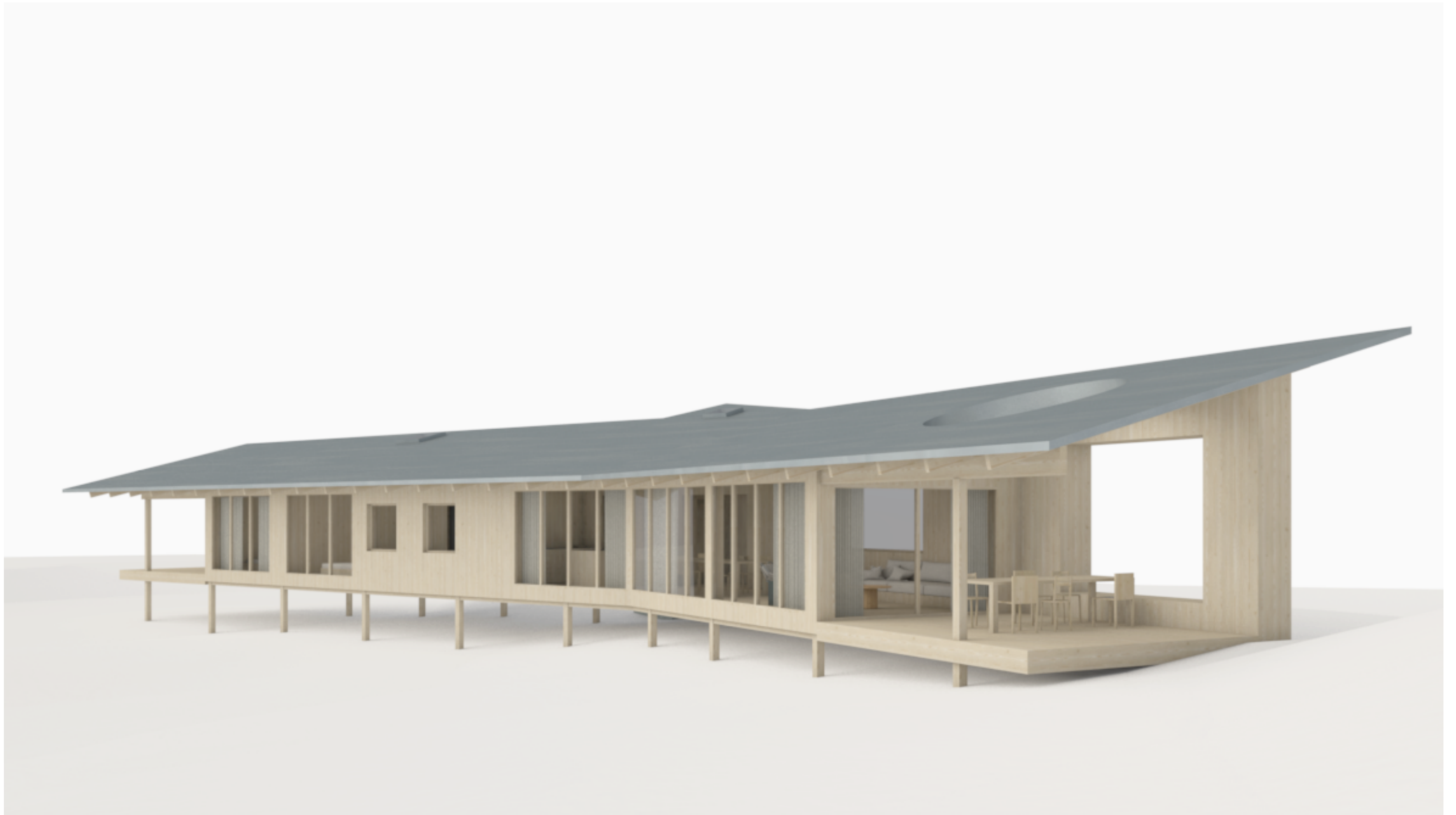




VY MOT VÄG



VY MOT VÄG



VY MOT ÄNG



VY MOT NORDVÄST



INTERIÖR I

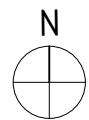
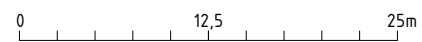


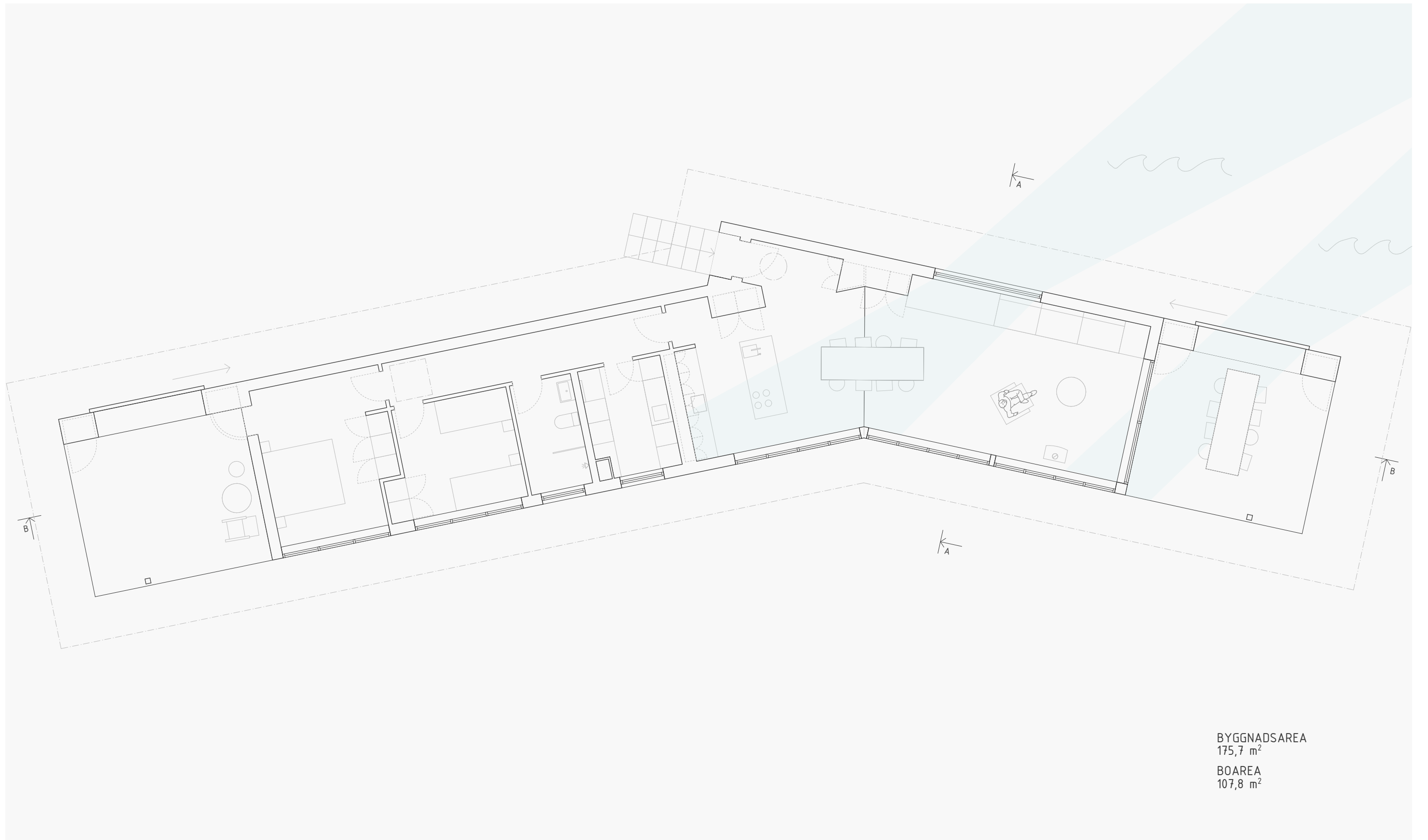
INTERIÖR II

II.
SADELTAK

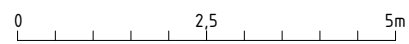


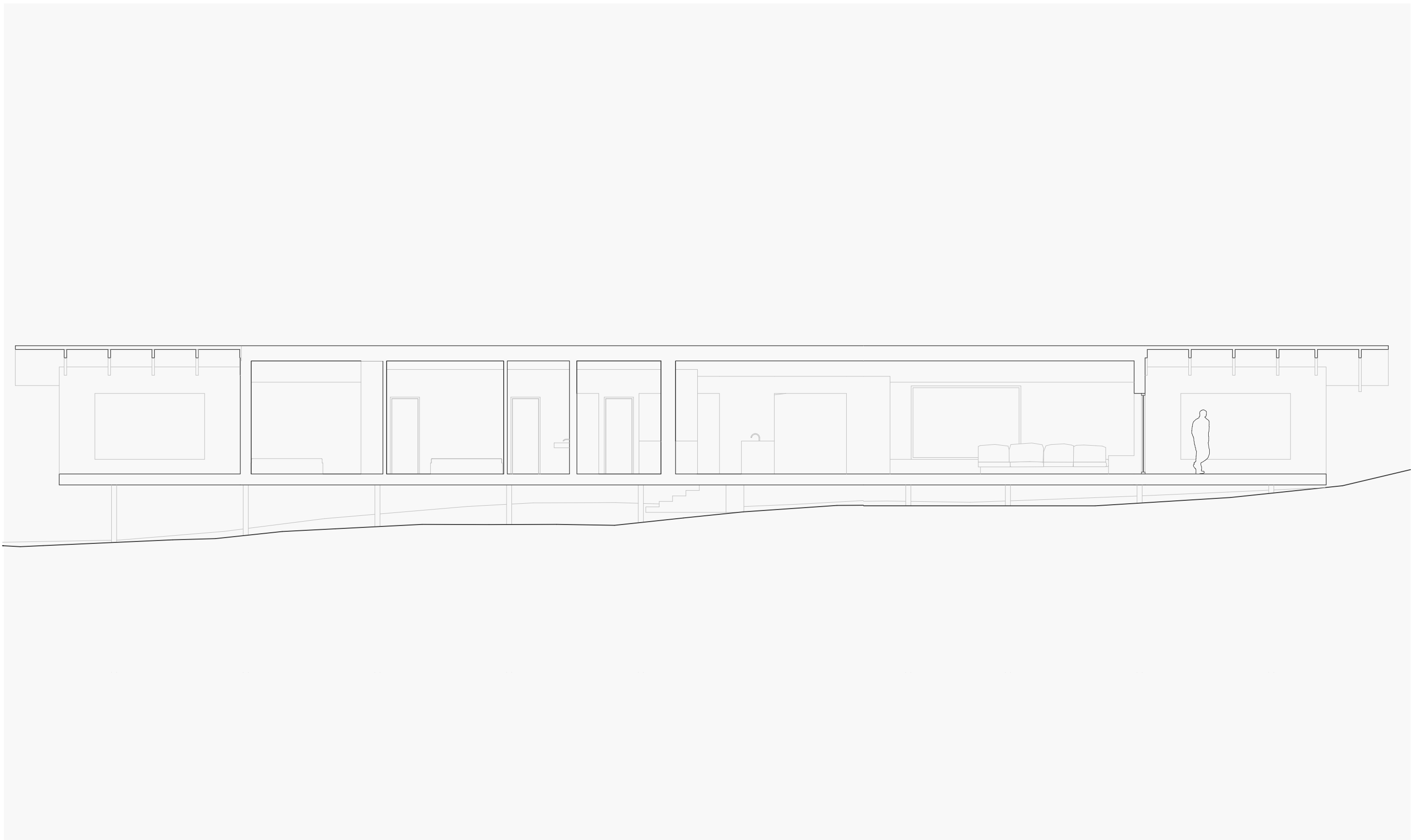
SITUATIONSPLAN





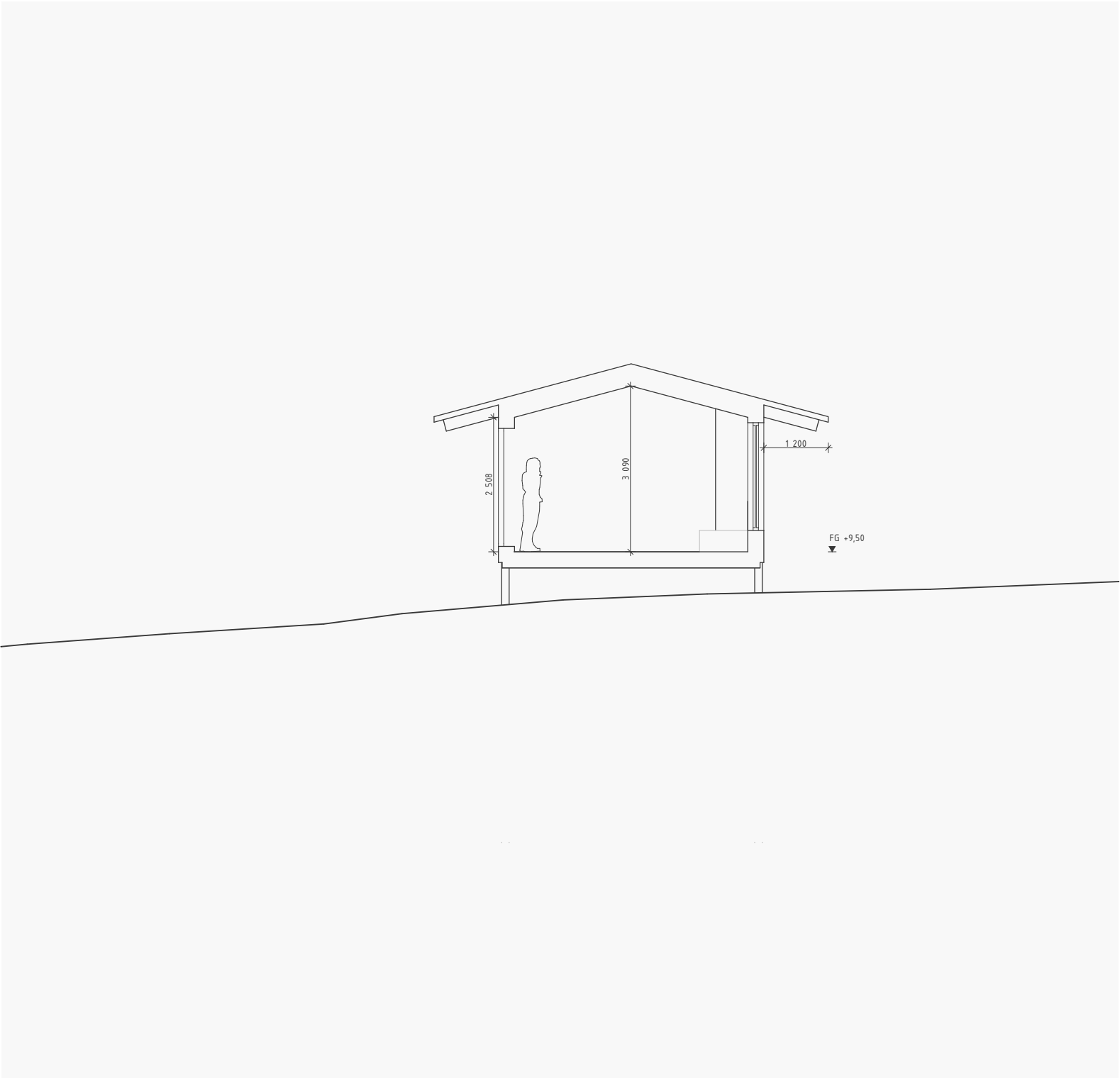
MARKPLAN



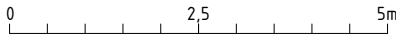


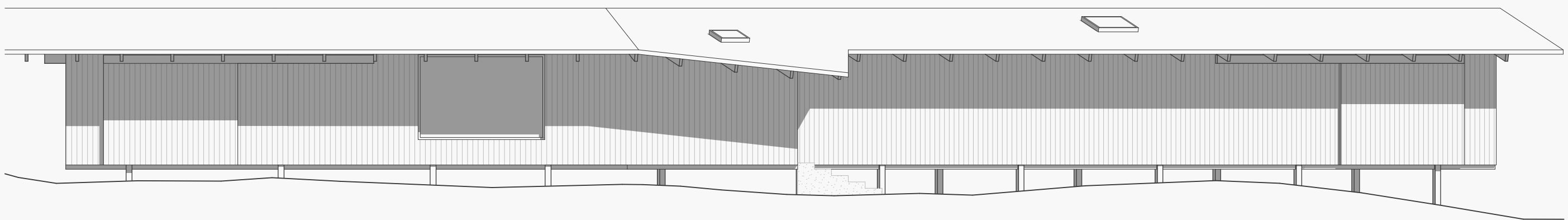
SEKTION B - B

0 2,5 5m

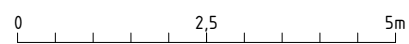


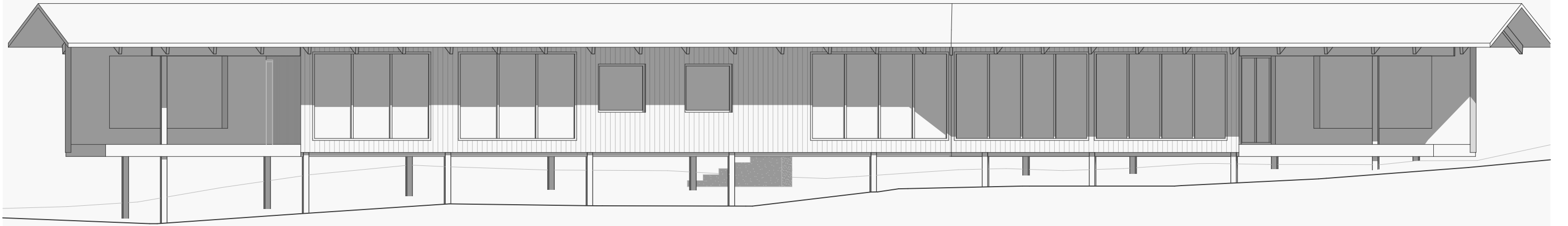
SEKTION A - A



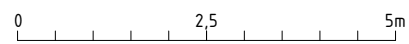


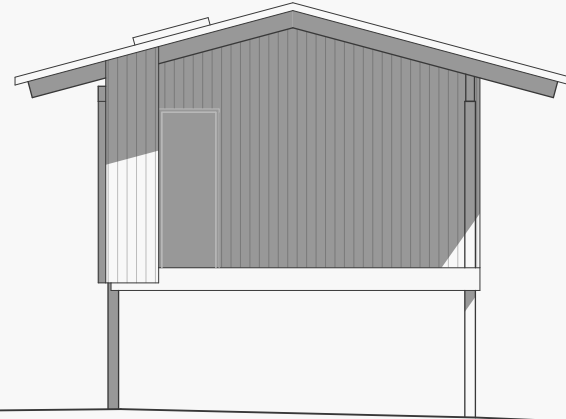
FASAD MOT NORR



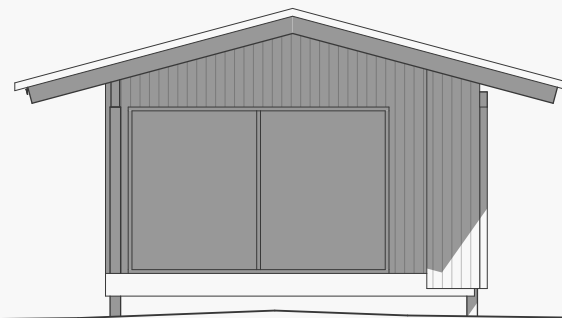


FASAD MOT SÖDER

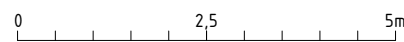


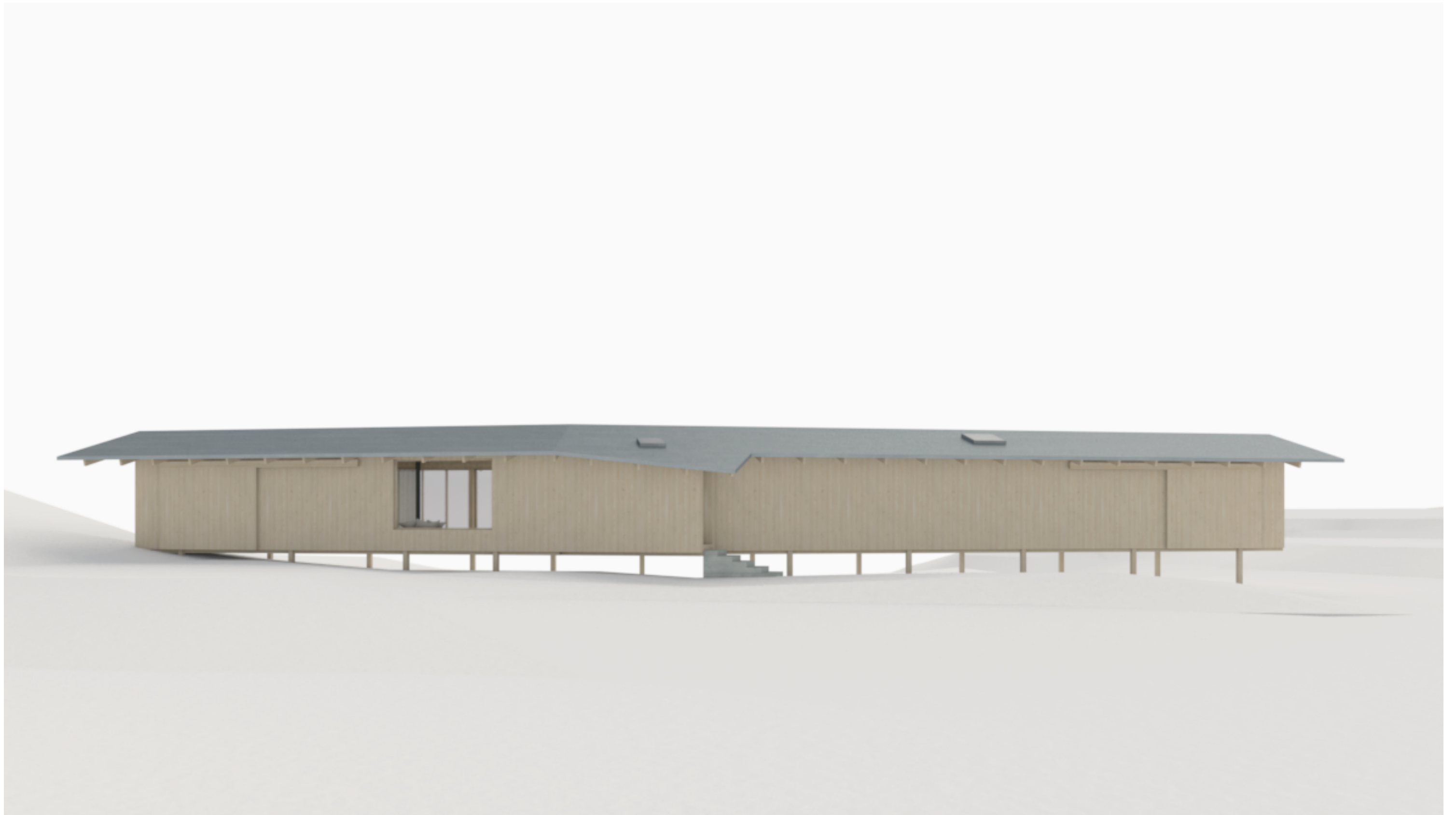


FASAD MOT VÄSTER

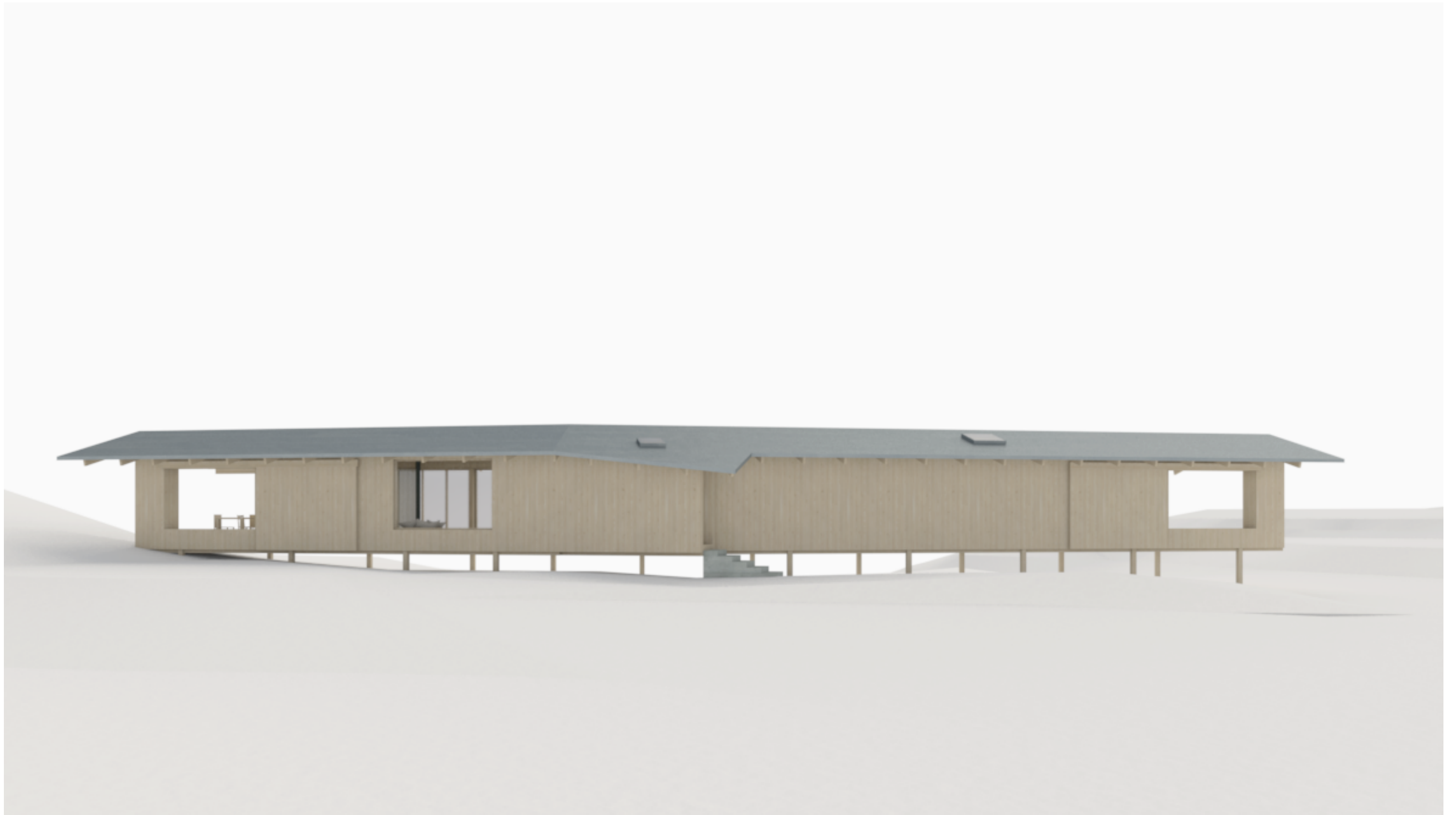


FASAD MOT ÖSTER

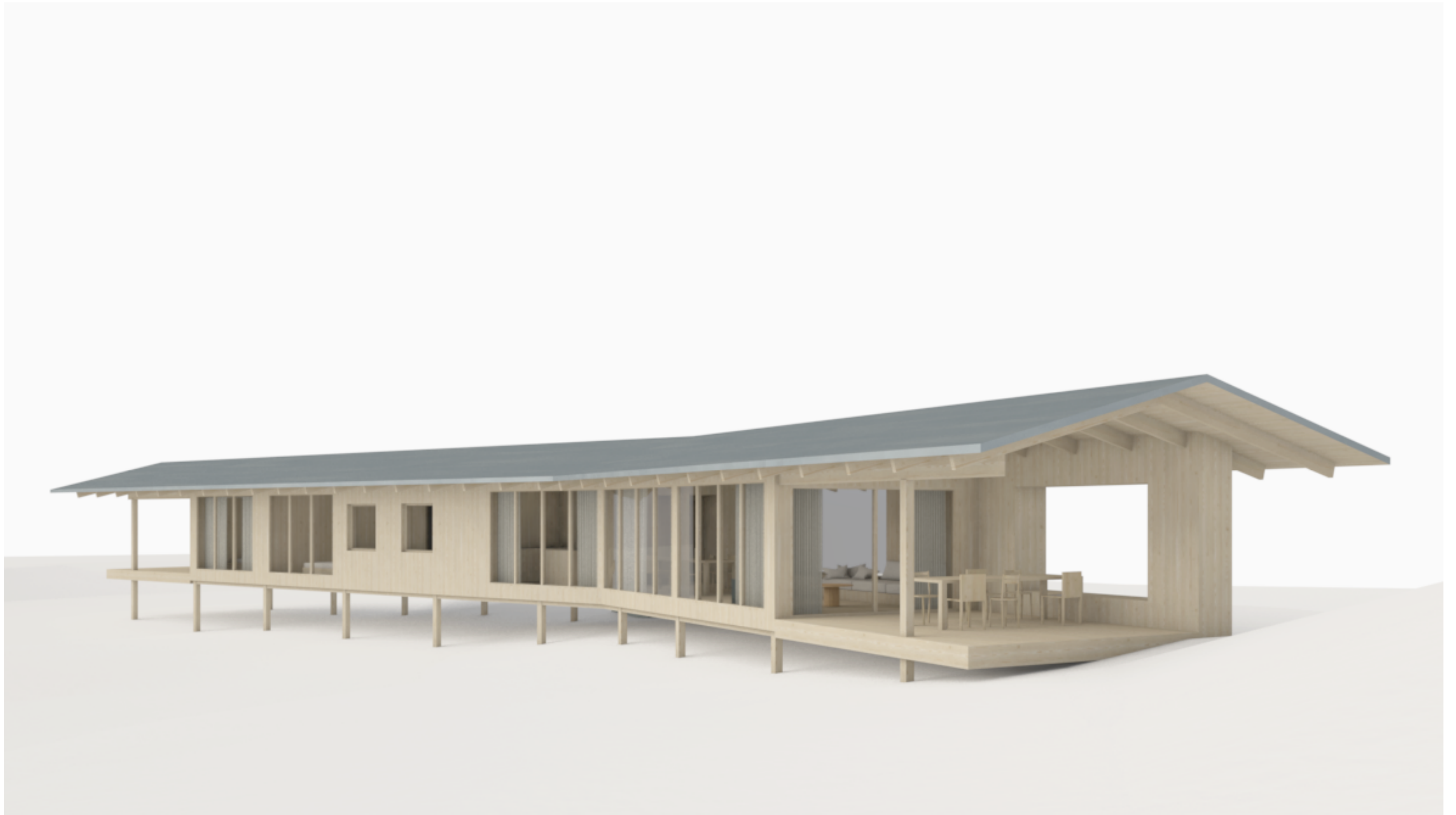




VY MOT VÄG



VY MOT VÄG



VY MOT ÄNG



VY MOT NORDVÄST



INTERIÖR I



INTERIÖR II